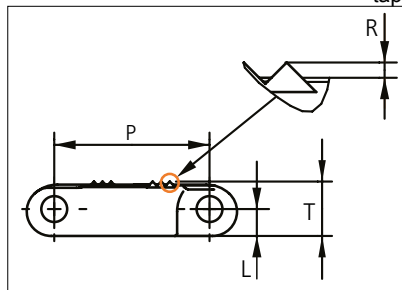


Plastic Modular Belt

Series **uni LPB** Type **Rough**

Distribué par Faber, service tapis
tapis@faber.fr tel. 03 24 27 86 38 fax 03 24 27 27 01



Straight running belt
Nominal pitch: 25.4 mm (1.00 in)
Surface type: Rough POM-NL (R10)
Surface type: Rough PP-FREC (R11)
Surface opening: Closed
Backflex radius: 25.0 mm (0.98 in)
Pin diameter: 4.0 mm (0.16 in)

Belt material & color	POM-NL K	PP-FREC K	mm		in			
			P (Nominal)	25.4	1.00	R	0.9	0.04
Pin material & color	PA6.6 B		L	4.4	0.17	T	8.9	0.35

Non standard material and color: See uni Material and Color Overview.

Alternative pin and lock materials: Lockpin: PBT **LG**

Belt width		Permissible tensile force (Belt/pin material)				***Belt weight (Belt/pin material)				Min No drive sprocket per shaft	Number of wear strips (min no)	
		POM-NL/PA66		PP-FREC/PA66		POM-NL/PA66		PP-FREC/PA66			**Carry (pcs)	**Return (pcs)
mm	in	N	lbf	N	lbf	Kg/m	lb/ft	Kg/m	lb/ft			
153	6.0	5355	1204	1913	430	1.0	0.68	0.7	0.45	2	1	1
229	9.0	8015	1802	2863	643	1.5	1.02	1.0	0.68	2	1	1
305	12.0	10675	2400	3813	857	2.0	1.35	1.3	0.90	3	3	2
381	15.0	13335	2998	4763	1071	2.5	1.69	1.7	1.13	3	3	2
457	18.0	15995	3596	5713	1284	3.0	2.03	2.0	1.35	4	4	2
533	21.0	18655	4194	6663	1498	3.5	2.36	2.3	1.58	4	4	2
609	24.0	21315	4792	7613	1711	4.0	2.70	2.7	1.80	5	5	3
686	27.0	24010	5397	8575	1928	4.5	3.04	3.0	2.03	5	5	3
762	30.0	26670	5995	9525	2141	5.0	3.38	3.4	2.25	6	6	3
838	33.0	29330	6593	10475	2355	5.5	3.72	3.7	2.48	6	6	3
914	36.0	31990	7191	11425	2568	6.0	4.05	4.0	2.70	7	7	4
990	39.0	34650	7789	12375	2782	6.5	4.39	4.4	2.93	7	7	4

Additional standard belt widths are available in steps of 76.0 mm (2.99 in). Additional non-standard belt widths are available in steps of 76.0 mm (2.99 in).

1979	77.9	69265	15571	24738	5561	13.1	8.78	8.7	5.85	14	14	7
------	------	-------	-------	-------	------	------	------	-----	------	----	----	---

Additional standard belt widths are available in steps of 76.0 mm (2.99 in). Additional non-standard belt widths are available in steps of 76.0 mm (2.99 in).

2969	116.9	103915	23360	37113	8343	19.6	13.17	13.1	8.78	20	20	10
------	-------	--------	-------	-------	------	------	-------	------	------	----	----	----

General belt tolerance is +0/-0.4% at 23°C/73°F and 50% RH. For exact belt width contact Customer Service. Non standard belt width on request

*Max. Load per Drive Sprocket. Belt material: POM-NLAS 2300 N (517 lbf), PP-FREC 1300 N (292 lbf)

**Full Carry way support (FS) deck of wearstrip material recommended for safe walk belts.

***Return belt support via free running gravity rollers recommended to avoid marking safe walk belt surface.

Surface grip in material NLAS (R10), PP-FREC (R11).

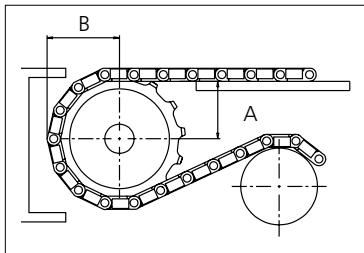
□ = Single Link



Sprocket

No of teeth	Bore size									Overall diameter		Pitch diameter		Hub diameter		A-dimension		B-dimension		Single row/Two way	Double row/Two way	Molded PA6 LG	Machined PA6 N
	Pilot bore	in	1.00	1.18	1.25	1.50	1.57	2.36	2.50														
	mm	25.4	30.0	31.8	38.1	40.0	60.0	63.5	mm	in	mm	in	mm	in	mm	in							
Z10	x		●	●	●	■	●			80.3	3.16	82.2	3.24	65.0	2.56	34.7	1.36	45.5	1.79	x		x	
Z12	x		●	●	●	■	●			96.8	3.81	98.1	3.86	70.0	2.76	43.0	1.69	53.5	2.11	x		x	
Z15	x			●	●	■	■	■	■	121.5	4.78	122.2	4.81	¹ 70.0 ² 100.0 ² 104.0	2.76 3.94 4.09	55.4	2.18	65.5	2.58	x		x	
Z18	x			●	●	■	■	■	■	146.0	5.75	146.3	5.76	70.0 ² 104.0 ¹ 120.0	2.76 4.09 4.72	67.6	2.66	77.5	3.05	x		x	
Z19	x			●	●	■	■	■	■	154.2	6.07	154.3	6.07	70.0 ¹ 120.0	2.76 4.72	71.7	2.82	81.6	3.21	x		x	

● Moulded sprocket ■ Moulded sprocket ■ Moulded sprocket



Same sprocket type as for the uni QNB serie.
 Other sprocket sizes are available upon request.
 Two-part sprockets are available upon request.
 Round bores are always delivered with keyway.
 Other bore sizes are available upon request.
 uni Retainer Rings: See uni Retainer Ring data sheet.
 Width of tooth = 10.0 mm (0.39 in)
 Width of sprocket = 25.0 mm (0.98 in)

Max load per sprocket shown does not take bore size into account.
 Please also ensure that sufficient size shaft is chosen for corresponding load.

For correct sprocket position: See uni Assembly Instructions for uni LPB.
 For more detailed sprocket information, contact Customer Service.

Non standard material and color: See uni Material and Color Overview.