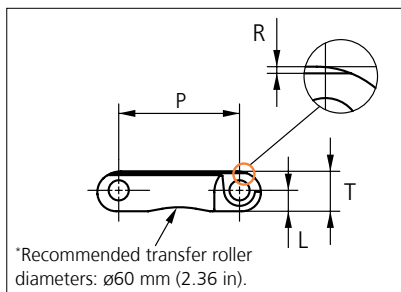
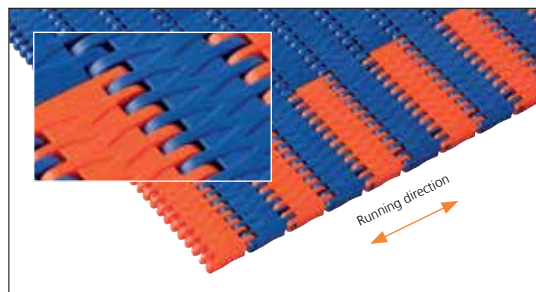


# Plastic Modular Belt

Series **uni JCB** Type **Y-Top**

Distribué par Faber, service tapis  
tapis@faber.fr tel. 03 24 27 86 38 fax 03 24 27 27 01



Straight running belt  
Nominal pitch: 25.4 mm (1.00 in)  
Surface type: Y Pattern surface grid  
Surface opening: 0%  
Backflex radius: 25.0 mm (0.98 in)  
Pin diameter: 4.0 mm (0.16 in)

<b>Belt material &amp; color</b>	POM SLF <b>B</b>
<b>Pin material &amp; color</b>	PA6.6 <b>B</b> PA6.6 <b>B</b> *

	mm	in		mm	in
<b>P (Nominal)</b>	25.4	1.00	<b>T</b>	8.4	0.33
<b>L</b>	4.4	0.17	<b>R</b>	0.4	0.02

POM SLF orange or yellow links can be used as SAFE WALK markers.  
\*Only for K200 / K300 chain

Belt width		Permissible tensile force (Belt/pin material)		Belt weight (Belt/pin material)		*Min No drive sprocket per shaft	Number of wear strips (min no)	
		POM SLF/PA6.6		POM SLF/PA6.6			***Carry (pcs)	**Return (pcs)
mm	in	N	lbf	kg/m	lb/ft			
50.3 (chain)	2.0	1761	396	0.3	0.22	2	2	2
76 (chain)	3.0	2660	598	0.5	0.33	2	2	2
153	6.0	5355	1204	1.0	0.67	2	2	2
229	9.0	8015	1802	1.5	1.00	2	2	2
305	12.0	10675	2400	2.0	1.33	3	3	2
382	15.0	13370	3006	2.5	1.67	3	3	2
458	18.0	16030	3604	3.0	2.00	4	4	2
534	21.0	18690	4202	3.5	2.33	4	4	2
610	24.0	21350	4799	4.0	2.66	5	5	3
687	27.0	24045	5405	4.5	3.00	5	5	3
763	30.0	26705	6003	5.0	3.33	6	6	3
839	33.0	29365	6601	5.5	3.67	6	6	3
915	36.0	32025	7199	5.9	4.00	7	7	4

Standard Increments in belt width: 76.3 mm (3.00 in).

1983	78.1	69405	15602	12.9	8.66	14	14	7
------	------	-------	-------	------	------	----	----	---

Standard Increments in belt width: 76.3 mm (3.00 in).

2974	117.1	104090	23399	19.3	12.99	20	20	10
------	-------	--------	-------	------	-------	----	----	----

General belt tolerance is +0/-0.4% at 23°C/73°F and 50% RH. For exact belt width contact Customer Service. Non standard belt width on request.

\*Max. Load per Drive Sprocket. Belt material: POM-SLF 2300 N (517 lbf).

\*\*Max. Spacing between wear strips, Carry: 152 mm (6 in); Return: 304 mm (12 in).

\*\*\*Full Carry way Support (FS) deck of wearstrip material recommended for safe walk belts.

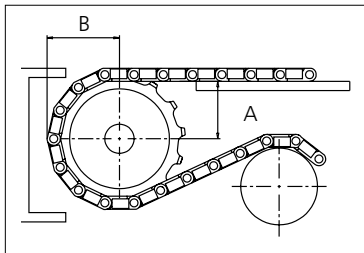
= Single Link



## Sprocket

No of teeth	Bore size									Overall diameter		Pitch diameter		Hub diameter		A-dimension		B-dimension		Single row/Two way	Double row/Two way	Molded PA6 LG	Machined PA6 N
	Pilot bore	in	1.00	1.18	1.25	1.50	1.57	2.36	2.50														
	mm	25.4	30.0	31.8	38.1	40.0	60.0	63.5	mm	in	mm	in	mm	in	mm	in							
Z10	x		●	●	●	■	●			80.3	3.16	82.2	3.24	65.0	2.56	34.7	1.36	45.5	1.79	x		x	
Z12	x		●	●	●	■	●			96.8	3.81	98.1	3.86	70.0	2.76	43.0	1.69	53.5	2.11	x		x	
Z15	x			●	●	■	■	■	■	121.5	4.78	122.2	4.81	<sup>1</sup> 70.0 <sup>2</sup> 100.0 <sup>2</sup> 104.0	2.76 3.94 4.09	55.4	2.18	65.5	2.58	x		x	
Z18	x			●	●	■	■	■	■	146.0	5.75	146.3	5.76	<sup>1</sup> 70.0 <sup>2</sup> 104.0 <sup>1</sup> 120.0	2.76 4.09 4.72	67.6	2.66	77.5	3.05	x		x	
Z19	x			●	●	■	■	■	■	154.2	6.07	154.3	6.07	<sup>1</sup> 70.0 <sup>1</sup> 120.0	2.76 4.72	71.7	2.82	81.6	3.21	x		x	

● Moulded sprocket ■ Moulded sprocket ■ Moulded sprocket



Same sprocket type as for the uni QNB serie.  
 Other sprocket sizes are available upon request.  
 Two-part sprockets are available upon request.  
 Round bores are always delivered with keyway.  
 Other bore sizes are available upon request.  
 uni Retainer Rings: See uni Retainer Ring data sheet.  
 Width of tooth = 10.0 mm (0.39 in)  
 Width of sprocket = 25.0 mm (0.98 in)

Max load per sprocket shown does not take bore size into account.  
 Please also ensure that sufficient size shaft is chosen for corresponding load.

For correct sprocket position: See uni Assembly Instructions for uni JCB.  
 For more detailed sprocket information, contact Customer Service.

Non standard material and color: See uni Material and Color Overview.